

MEMORANDUM

TO: GTC Planning Committee Members & Alternates
FROM: James Stack, Executive Director JS
DATE: November 10, 2021
SUBJECT: [Proposed Council Resolution 21-89, accepting reports as evidence of completion of a UPWP Task](#)

The following items are provided for your consideration:

- 1. Proposed Council Resolution 21-89** (Accepting the *Monroe County Traffic Signal/Sign Pole Asset Management* as evidence of completion of UPWP Task 7950) and the **Executive Summary** of the project.

Monroe County has completed UPWP Task 7950, Monroe County Traffic Signal/Sign Pole Asset Management, and will discuss it at the November 18, 2021 Planning Committee meeting.

Recommended Action:

Recommend action by the GTC Board on proposed Council Resolution 21-89.

GENESEE TRANSPORTATION COUNCIL

RESOLUTION

Resolution 21-89 *Accepting the Monroe County Traffic Signal / Sign Pole Asset Management Executive Summary as evidence of completion of UPWP Task 7950*

WHEREAS,

1. The *FY 2021-2022 Unified Planning Work Program* includes Task 7950, Monroe County Traffic Signal / Sign Pole Asset Management, for the purpose of establishing a location-based inventory of all traffic signal and overhead sign structure poles currently maintained by Monroe County;
2. Said Tasks included field inspection of all County-maintained traffic and pedestrian signal poles, sign poles, and associated features. Assets were evaluated using the NYSDOT Traffic Signal Pole Inspection Manual (May 2015); FHWA Guidelines for Installation, Inspection, Maintenance and Repair of Structural Supports for Highway Signs, Luminaires, and Traffic Signals (FHWA NHI 05-036); and the national Manual of Uniform Traffic Control Devices (MUTCD) with NYSDOT Supplement (latest revision). A ranking system based on the NYSDOT Traffic Signal Pole Inspection Guidelines was used to prioritize improvements and repairs based on current design and condition;
3. Said Task has been completed and has resulted in the *Monroe County Traffic Signal / Sign Pole Asset Management* inventory consisting of a working database utilizing the County's Geographic Information Systems program;
4. Said Task has been reviewed by GTC staff and member agencies through the GTC committee process and has been found to be consistent with the goals, objectives, and recommendations of the Long Range Transportation Plan;

NOW, THEREFORE, BE IT RESOLVED

1. That the Genesee Transportation Council hereby accepts the *Monroe County Traffic Signal / Sign Pole Asset Management* executive summary as evidence of completion of UPWP Task 7950; and
2. That this resolution takes effect immediately.

CERTIFICATION

The undersigned duly qualified Secretary of the Genesee Transportation Council certifies that the foregoing is a true and correct copy of a resolution adopted at a legally convened meeting of the Genesee Transportation Council held on December 9, 2021.

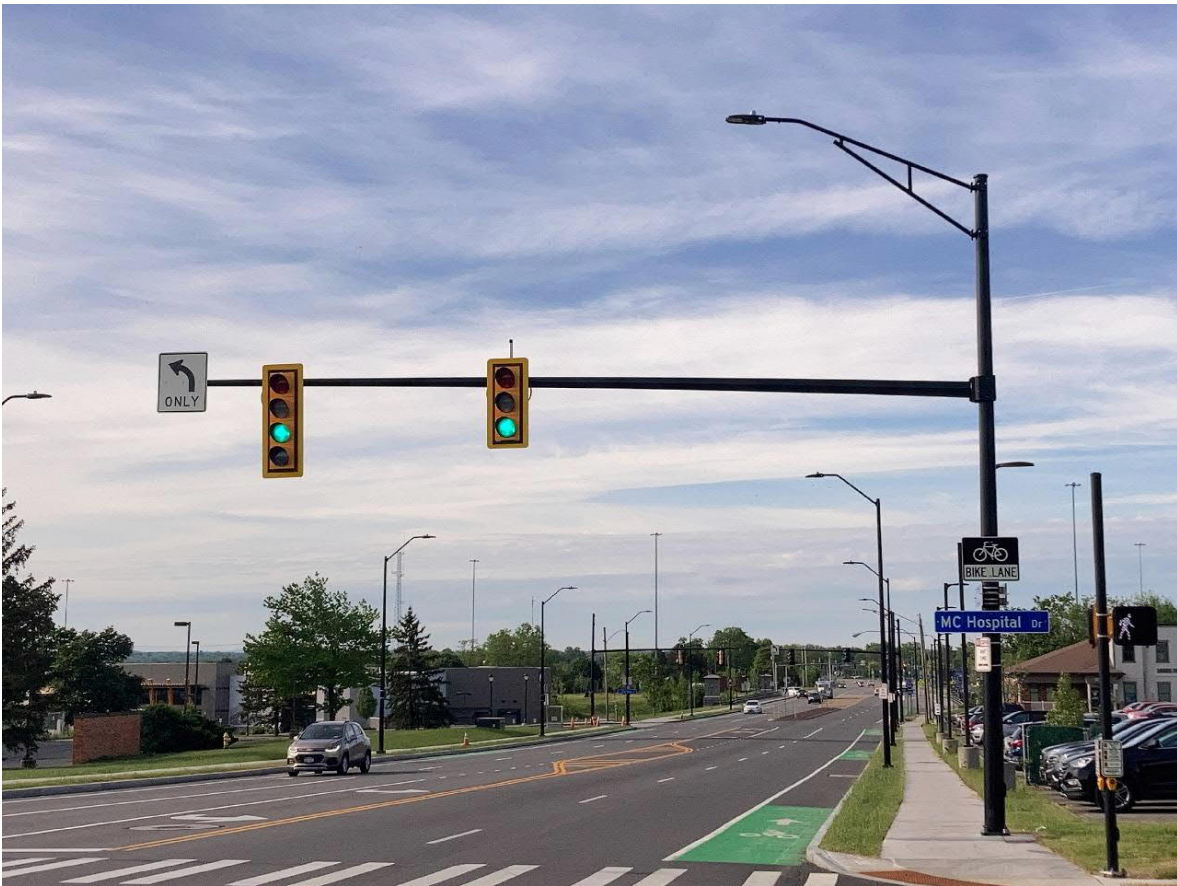
Date _____

CHRISTOPHER T. REEVE, Secretary
Genesee Transportation Council

Traffic Signal and Sign Pole Asset Management

Project Summary Report

October 2021



MONROE COUNTY
DEPARTMENT OF TRANSPORTATION

Barton
& **Loguidice**

EXECUTIVE SUMMARY

The Monroe County Traffic Signal and Sign Pole Asset Management project was initiated by Monroe County Department of Transportation to provide an inventory of all existing traffic signal features and overhead sign structure poles currently maintained by Monroe County. The project creates a Countywide inventory of poles and associated traffic signal equipment in GIS format which can be used to identify pole locations and types, general conditions, and assists in planning where traffic signal and overhead sign pole replacements may be needed in the future. This inventory features many new data fields and consists of a working geodatabase that will be added to the growing list of County assets currently available in Geographic Information System (GIS) format and incorporated into the County's asset management initiatives.

Pole type and location, number and size of signal heads, directions served, traffic signs, pull boxes, cabinets, backplates, pedestrian appurtenances, and pole components such as cameras, radios, emergency pre-emption, and video detection were among the fields collected at each location during field inspections performed between November 2020 and July 2021. For a comprehensive list of all data categories collected, see the Field Data Collection list in Section 4.0 of this report. The field data was accompanied by photograph documentation and entered directly into the online geodatabase using ArcGIS Survey123 software installed on mobile devices.

The current inventory consists of 649 traffic signal locations as well as 20 sign pole locations. A traffic signal location can consist of one standard signalized intersection, multiple signalized intersections with one cabinet controller, or an intersection with only pull boxes and conduit installed (signal poles, pedestrian signal poles, and cabinets are not present) and a sign pole location can consist of a single mast arm pole or two span wire poles. Of the 649 locations, 11 intersections currently only have pull boxes and conduit installed and 1 intersection has pull boxes, conduit, and a cabinet installed but no signal poles or pedestrian signal poles. 68 of the 649 traffic signal locations are owned by the New York State Department of Transportation (NYSDOT). Table 1 summarizes the inventory by municipality.

Table 1 Traffic Signal/Sign Pole Location Summary				
Town/Village/City	MCDOT Signal Locations	NYS DOT Signal Locations	Sign Pole Locations	Pull Box and Conduit Only
Brighton	32	0	2	2
Chili	4	0	0	1
East Rochester	2	0	0	0
Gates	13	0	0	0
Greece	56	18	1	4
Hilton	1	0	0	0
Henrietta	23	2	1	0
Irondequoit	38	3	2	2
Penfield	10	0	0	0
Perinton	7	0	0	0
Pittsford	1	0	0	0
Rochester	379	45	14	3
Victor (Ontario County)	1	0	0	0
Webster	14	0	0	0
TOTAL	581	68	20	12

Signal/sign pole condition was visually assessed in the field and condition scores were assigned based on the observed level of deterioration or damage. The condition rating methodology is based on the State of New York Department of Transportation Traffic Signal Pole Inspection Guidelines and consists of a 0 to 5 rating system, with CS-1 being Good, CS-2 being Fair, CS-3 being Poor and CS-4 being Critical. If the condition of an element was Not Applicable or Unknown, a rating of CS-0 or CS-5 would be given, respectively. For a detailed description of each condition state, see the Condition Assessment Methodology in Section 6.0 of the main body of this report. Section 7.2 of this report provides a summary of the inventory Condition Assessment as well as a comprehensive list of every element given a condition rating of Critical. In total, 32 concrete foundations, 1 set of anchor bolts, 4 baseplates, and 20 post/column supports were given a condition state of Critical. Although traffic signal pole foundations and the post/column supports had the highest frequency of Critical ratings, those signal poles represent 2% or less of the entire traffic signal pole inventory as displayed in the following Figures.

